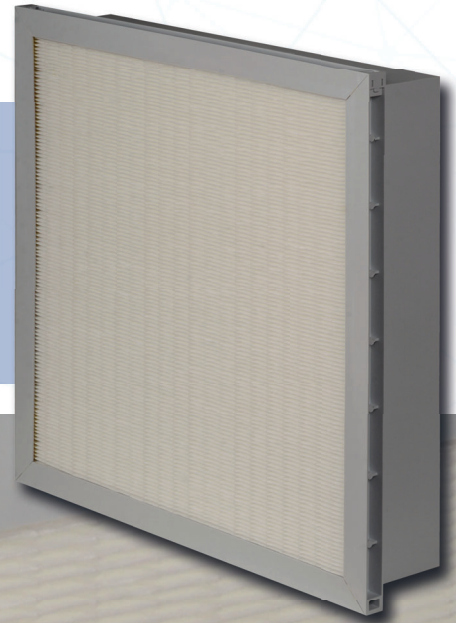


# RIGID FILTER

(PLASTIC FRAME)

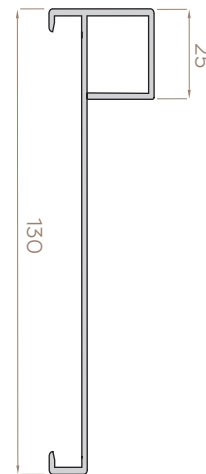


### Applications:

Capturing fine particles  
 Second or final stage filter in HVAC  
 Pre-filter for HEPA filters

### Highlights:

- Eurovent certified
- Large filtration area
- Simple and light weight
- High dust holding capacity
- Low initial pressure drop



Filter Standard:	ISO 16890	Max. Operating Temperature:	80°C
Filter Class:	ISO ePM1 - ISO ePM2,5 - ISO ePM10	Depth:	130 mm
Media:	Glass Fiber	Faceguard:	Available on request
Frame:	Polystyrene (PS)	Sealing Compound:	Two component polyurethane
Rec. Final Pressure Drop EN13053:	Initial ΔP +100 Pa or initial ΔP x3 whichever is lower	Separators:	Hotmelt

## RIGID FILTER (PLASTIC FRAME)

Filter Model	Filter Class		Dimensions WxHxD (mm)	Filtration Area (m <sup>2</sup> )	Nominal Airflow (m <sup>3</sup> /h)	Initial Pressure Drop (Pa)
	EN 779 (cancelled)	ISO 16890				
FR-M6-P-H-25-287-287-130-FW-W	M6	ePM10 75%	287x287x130	3,2	750	90
FR-M6-P-H-25-287-592-130-FW-W	M6	ePM10 75%	287x592x130	6,5	1500	90
FR-M6-P-H-25-490-592-130-FW-W	M6	ePM10 75%	490x592x130	10,7	2500	90
FR-M6-P-H-25-592-592-130-FW-W	M6	ePM10 75%	592x592x130	13	3000	90
FR-F7-P-H-25-287-287-130-FW-W	F7	ePM1 55%	287x287x130	3,2	750	110
FR-F7-P-H-25-287-592-130-FW-W	F7	ePM1 55%	287x592x130	6,5	1500	110
FR-F7-P-H-25-490-592-130-FW-W	F7	ePM1 55%	490x592x130	10,7	2500	110
FR-F7-P-H-25-592-592-130-FW-W	F7	ePM1 55%	592x592x130	13	3000	110
FR-F8-P-H-25-287-287-130-FW-W	F8	ePM1 75%	287x287x130	3,2	750	140
FR-F8-P-H-25-287-592-130-FW-W	F8	ePM1 75%	287x592x130	6,5	1500	140
FR-F8-P-H-25-490-592-130-FW-W	F8	ePM1 75%	490x592x130	10,7	2500	140
FR-F8-P-H-25-592-592-130-FW-W	F8	ePM1 75%	592x592x130	13	3000	140
FR-F9-P-H-25-287-287-130-FW-W	F9	ePM1 85%	287x287x130	3,2	750	160
FR-F9-P-H-25-287-592-130-FW-W	F9	ePM1 85%	287x592x130	6,5	1500	160
FR-F9-P-H-25-490-592-130-FW-W	F9	ePM1 85%	490x592x130	10,7	2500	160
FR-F9-P-H-25-592-592-130-FW-W	F9	ePM1 85%	592x592x130	13	3000	160

"Other dimensions are available on request!"

"Differential Pressure Tolerance ( ±10% + 5 Pa ) or ( 10 Pa + 5 Pa ) whichever is greater"

## RIGID FILTER (PLASTIC FRAME) CODE CONFIGURATION

Filter Type	Filter Class	Frame	Capacity	Flange	Dimensions (mm)	Faceguard	Gasket
FR :Rigid Filter (Plastic Frame)	M6 F7 F8 F9	P : Plastic	M : Standard H : High	25	592x592x130	FW: Without FC: On Clean Side FD: On Dirty Side FB: On Both Sides	W: Without P: Continuous Pu Foam PP: Pu Foam on Both Sides E: EPDM EE: EPDM Flat On Both Sides

Rigit Filter "H" (P130)

