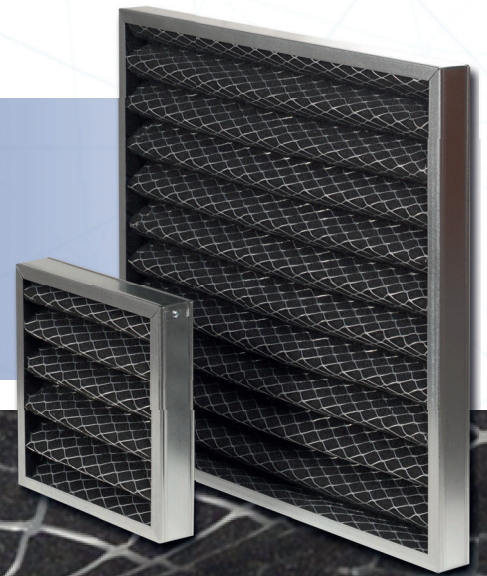


POLYURETHANE ZIG-ZAG FILTER



Applications:

Pre-filter for ventilation equipment and HVAC

Highlights:

- Washable
- Optimized operational costs
- Easy to handle and install
- Robust construction (two side mesh)

Filter Standard:

ISO 16890

Filter class:

ISO Coarse

Media:

Polyurethane

Frame:

Galvanized, Stainless Steel

Rec. Final Pressure Drop EN13053:

Initial ΔP +50 Pa or initial ΔP x3
whichever is lower

Max. Operating Temperature:

80°C

Standard depth:

48 - 96 mm

POLYURETHANE ZIG-ZAG FILTER

Filter Model	Filter Class		Media Material	Dimensions WxHxD (mm)	Filtration Area (m ²)	Nominal Airflow (m ³ /h)	Initial Pressure Drop (Pa)
	EN 779 (cancelled)	ISO 16890					
PZ-G3-G-287-287-48-W	G3	Coarse 40%	Polyurethane	287x287x48	0,1	850	50
PZ-G3-G-287-592-48-W	G3	Coarse 40%	Polyurethane	287x592x48	0,3	1750	50
PZ-G3-G-592-592-48-W	G3	Coarse 40%	Polyurethane	592x592x48	0,6	3400	50
PZ-G3-G-287-287-96-W	G3	Coarse 40%	Polyurethane	287x287x96	0,2	850	40
PZ-G3-G-287-592-96-W	G3	Coarse 40%	Polyurethane	287x592x96	0,5	1750	40
PZ-G3-G-592-592-96-W	G3	Coarse 40%	Polyurethane	592x592x96	0,9	3400	40

"Other dimensions are available on request."
 "Differential Pressure Tolerance (±10% + 5 Pa) or (10 Pa + 5 Pa) whichever is greater"

POLYURETHANE ZIG-ZAG FILTER CODE CONFIGURATION

Filter Type	Filter Class	Frame	Dimensions (mm)	Gasket
PZ : Polyurethane Zig-Zag	G3	G : Galvanized SS: Stainless Steel	592x592x48	W: Without P: Continuous Pu Foam PP: Pu Foam on Both Sides E: EPDM EE: EPDM Flat On Both Sides

