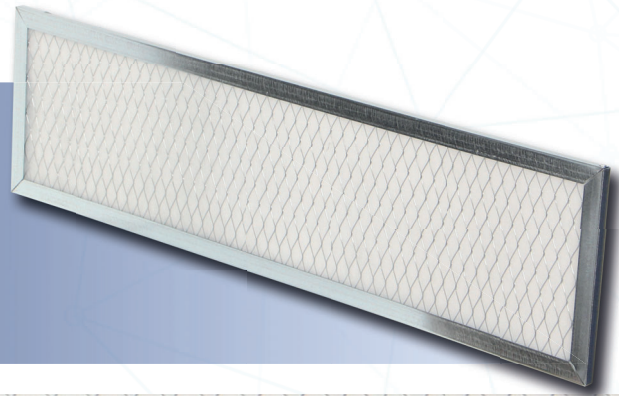


FANCOIL FILTER



Applications:
Fan-coil Units

Highlights:

- Robust construction

Filter Standard:	ISO 16890	Rec. Final Pressure Drop EN13053:	Initial ΔP +50 Pa or initial $\Delta P \times 3$ whichever is lower
Filter Class:	ISO Coarse	Max. Operating Temperature:	80°C
Media:	Synthetic Fiber	Standard depth:	6 - 8 - 10 mm
Frame:	Galvanized	Expanded Metal (Mesh):	Double Side



FANCOIL FILTER

Filter Model	Filter Class		Media Material	Width (mm)	Height (mm)	Depth (mm)	Air Velocity (m/s)	Initial Pressure Drop (Pa)
	EN 779 (cancelled)	ISO 16890						
GF-G2-G-175-(400 to 1500)-6	G2	Coarse 25%	Synthetic	175	400-1500	6	2	20
GF-G2-G-185-(400 to 1500)-6	G2	Coarse 25%	Synthetic	185	400-1500	6	2	20
GF-G2-G-205-(400 to 1500)-6	G2	Coarse 25%	Synthetic	205	400-1500	6	2	20
GF-G2-G-210-(400 to 1500)-6	G2	Coarse 25%	Synthetic	210	400-1500	6	2	20
GF-G2-G-245-(400 to 1500)-6	G2	Coarse 25%	Synthetic	245	400-1500	6	2	20
GF-G3-G-175-(400 to 1500)-8	G3	Coarse 45%	Synthetic	175	400-1500	8	2	45
GF-G3-G-185-(400 to 1500)-8	G3	Coarse 45%	Synthetic	185	400-1500	8	2	45
GF-G3-G-205-(400 to 1500)-8	G3	Coarse 45%	Synthetic	205	400-1500	8	2	45
GF-G3-G-210-(400 to 1500)-8	G3	Coarse 45%	Synthetic	210	400-1500	8	2	45
GF-G3-G-245-(400 to 1500)-8	G3	Coarse 45%	Synthetic	245	400-1500	8	2	45
GF-G4-G-175-(400 to 1500)-10	G4	Coarse 55%	Synthetic	175	400-1500	10	2	60
GF-G4-G-185-(400 to 1500)-10	G4	Coarse 55%	Synthetic	185	400-1500	10	2	60
GF-G4-G-205-(400 to 1500)-10	G4	Coarse 55%	Synthetic	205	400-1500	10	2	60
GF-G4-G-210-(400 to 1500)-10	G4	Coarse 55%	Synthetic	210	400-1500	10	2	60
GF-G4-G-245-(400 to 1500)-10	G4	Coarse 55%	Synthetic	245	400-1500	10	2	60

"Other dimensions are available on request."
 "Differential Pressure Tolerance (±10% + 5 Pa) or (10 Pa + 5 Pa) whichever is greater"

FANCOIL FILTER CODE CONFIGURATION

Filter Type	Filter Class	Frame	Dimensions (mm)
GF : Fancoil Filter	G2 G3 G4	G: Galvanized	592x592x6

