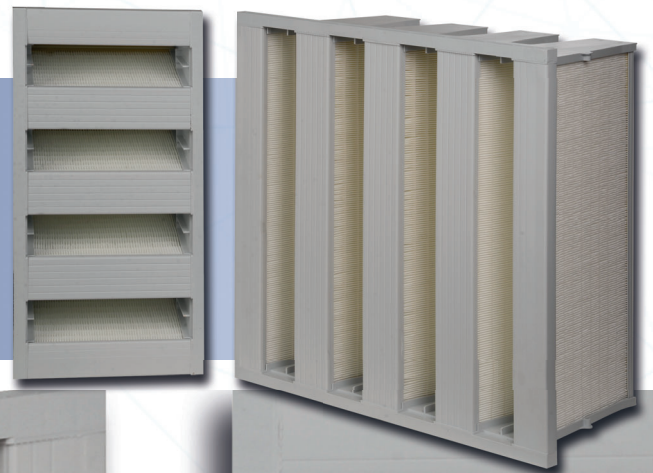


# ENERGY MODEL V-COMPACT FILTER



## Applications:

Capturing fine particles  
Second or final stage filter in HVAC  
Pre-filter for HEPA filters

## Highlights:

- Eurovent certified
- Large filtration area
- Simple and light weight
- High dust holding capacity
- Low initial pressure drop

Filter Standard:	ISO 16890	Max. Operating Temperature:	80°C
Filter Class:	ISO ePM1- ISO ePM2,5 - ISO ePM10	Faceguard:	Available on request
Media:	Glass Fiber	Gasket:	Available on request
Frame:	Polystyrene (PS)	Sealing Compound:	Two component polyurethane
Rec. Final Pressure Drop EN13053:	Initial $\Delta P$ +100 Pa or initial $\Delta P$ x3 whichever is lower	Seperators:	Hotmelt



## ENERGY MODEL V-COMPACT FILTER

Filter Model	Filter Class		Filtration Area (m <sup>2</sup> )	Nominal Airflow (m <sup>3</sup> /h)	N. Initial Pressure Drop (Pa)	Rated Airflow (m <sup>3</sup> /h)	R. Initial Pressure Drop (Pa)	Energy Class
	EN 779 (cancelled)	ISO 16890						
FVE-M6-287-592-292-FW-W	M6	ePM10 75%	9	2125	100	1700	70	E
FVE-M6-490-592-292-FW-W	M6	ePM10 75%	14,5	3500	100	2700	70	E
FVE-M6-592-592-292-FW-W	M6	ePM10 75%	18	4250	100	3400	70	E
FVE-F7-287-592-292-FW-W	F7	ePM1 55%	9	2125	110	1700	80	D
FVE-F7-490-592-292-FW-W	F7	ePM1 55%	14,5	3500	110	2700	80	D
FVE-F7-592-592-292-FW-W	F7	ePM1 55%	18	4250	110	3400	80	D
FVE-F8-287-592-292-FW-W	F8	ePM1 75%	9	2125	130	1700	90	D
FVE-F8-490-592-292-FW-W	F8	ePM1 75%	14,5	3500	130	2700	90	D
FVE-F8-592-592-292-FW-W	F8	ePM1 75%	18	4250	130	3400	90	D
FVE-F9-287-592-292-FW-W	F9	ePM1 85%	9	2125	150	1700	100	D
FVE-F9-490-592-292-FW-W	F9	ePM1 85%	14,5	3500	150	2700	100	D
FVE-F9-592-592-292-FW-W	F9	ePM1 85%	18	4250	150	3400	100	D

"Other dimensions are available on request."  
 "Differential Pressure Tolerance ( ±10% + 5 Pa ) or ( 10 Pa + 5 Pa ) whichever is greater"

### ENERGY MODEL V-COMPACT FILTER CODE CONFIGURATION

Filter Type	Filter Class	Dimensions (mm)	Faceguard	Gasket
FVE : Energy Model, V-Compact Filter	M6 F7 F8 F9	592x592x292	FW : Without FC2: On 2 Edge Sides FC8: On 8 Edge Sides	W: Without P: Continuous Pu Foam PP: Pu Foam on Both Sides E: EPDM EE: EPDM Flat On Both Sides

