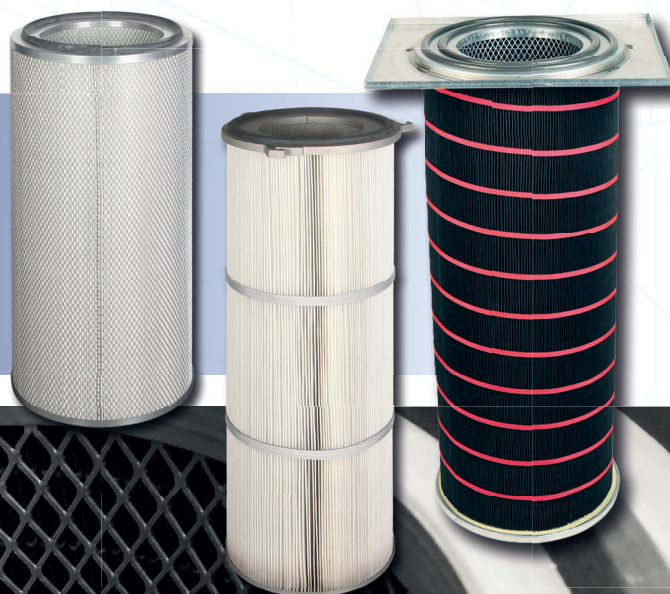


CYLINDRICAL FILTER



Applications:

Dust collection systems
Gas turbine air intake systems
Power plants
Compressors
Pharmaceutical and food industries
Welding applications

Highlights:

- High filtration area
- Rubber or PU foam gasket to ensure airtight sealing
- Suitable for jet pulse cleaning (optional)
- Strong construction
- Equal spacing between each pleat enable air flow to pass through the filter media

Filter Class:

M5 - F9

Inner Diameter:

240 mm

Media:

Cellulose + Synthetic, Nano Coated

Outer Diameter:

420 mm

Frame:

Galvanized Steel

Max. Operating Temperature:

80 °C

CYLINDRICAL FILTER

Filter Model	Filter Class		Dimensions ODxDxH (mm)	Filtration Area (m ²)	Filter Media	Nominal Airflow (m ³ /h)	Initial Pressure Drop (Pa)
	EN 779	ISO 16890					
FCY-CB-Ø420-240x500	M5	Coarse 90%	420x240x500	15	Cellulose + Synthetic	625	100
FCY-CB-Ø420-240x660	M5	Coarse 90%	420x240x660	20	Cellulose + Synthetic	830	100
FCY-CB-Ø420-240x1000	M5	Coarse 90%	420x240x1000	30	Cellulose + Synthetic	1250	100
FCY-CN-Ø420-240x500	F9	ePM1 80%	420x240x500	15	Nano Coated	625	250
FCY-CN-Ø420-240x660	F9	ePM1 80%	420x240x660	20	Nano Coated	830	250
FCY-CN-Ø420-240x1000	F9	ePM1 80%	420x240x1000	30	Nano Coated	1250	250

"Other dimensions are available on request."

CYLINDRICAL FILTER CODE CONFIGURATION

Filter Type	Filter Class	Inner Diameter	Outer Diameter	Lenght (mm)	Faceguard	Gasket
FCY : Cylindrical Filter	M5 F9	240 mm	420 mm	500 660 1000	FW: Without	W: Without