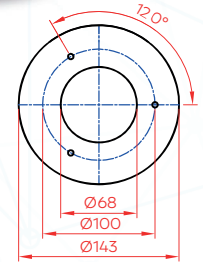
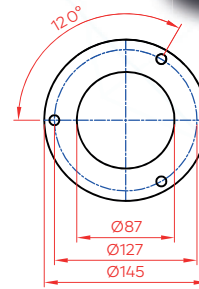
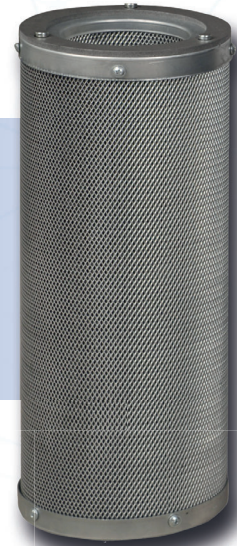


# ACTIVATED CARBON SINGLE CARTRIDGE

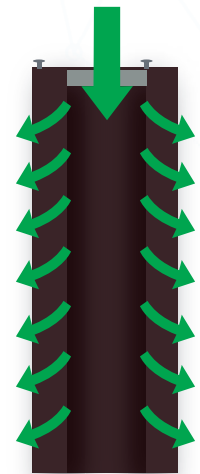


## Applications:

Smell and corrosion control in industrial and commercial applications  
 Kitchen ventilation  
 Wide range of molecular contamination issues

## Highlights:

- High efficiency in gas filtration
- Pellet (granulated) activated carbon
- Robust and air tight
- Filled with a wide variety of activated carbon medias including impregnated medias
- Filled on vibration table to prevent any space



Media:	Activated Carbon Impregnated Medias	Gasket:	Standard for cartridge
Frame:	Galvanized and painting steel	Outer Diameter:	145 mm
Max. Operating Temperature:	50°C	Recommended relative humidity:	< 70% RH



Cartridge Model (Single)	Cartridge Type	Cartridge Volume (dm <sup>3</sup> )	Cartridge Airflow (m <sup>3</sup> /h)
CR-G-145-N-AC-400	N	3,9	150
CR-G-145-N-AC-450	N	4,4	160
CR-G-145-N-AC-600	N	5,9	212,5
CR-G-145-H-AC-400	H	4,7	150
CR-G-145-H-AC-450	H	5,3	160
CR-G-145-H-AC-600	H	7	212,5

### ACTIVATED CARBON SINGLE CARTRIDGE CODE CONFIGURATION

Filter Type	Frame	Outer Diameter	Capacity	Media	Length
CR : Activated Carbon Single Cartridge	P: Powder Coated G: Galvanized Metal	145	N: Normal H: High	AC: Activated Carbon +11: 11% Potassium Permanganate +11/AC: 11% Potassium Permanganate +AC KOH: Potassium Hydroxide KI4%: Potassium Iodide ACPA: Phosphoric Acid S: Sulphur TB: Triple Blend (KOH + AC + 11%) Z: Special	400 450 600